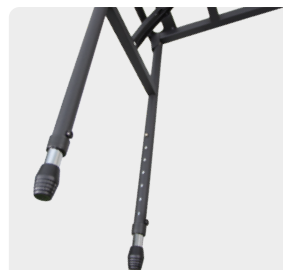


K-708B

Foldable design for easy storage without taking up space, ready to use right out of the box; adjustable height and width make it suitable for keyboards, DJ controllers, and various electronic instruments; anti-slip rubber feet provide stable support for worry-free performance; compatible with the K-708BUP extension stand for more flexible expansion.

Expandable Structure :

Professionally designed to extend the range of use, offering flexibility to meet various needs, with a solid structure that maintains stability even when fully extended.



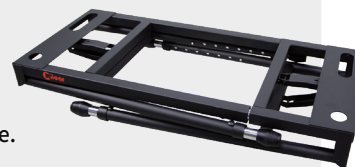
Easily extendable table legs with a spring-lock adjustment system, allowing flexible height customization to suit your needs.

Optional upper extension stand available, allowing placement of two keyboards at once, flexibly expanding space to meet multi-instrument needs.



Dual-side support bar design enhances overall structural stability and load capacity.

Ready to use out of the box, foldable design for easy carrying, simple storage, and space-saving convenience.



Q'TY	6 PCS / CTN
N.W.	5.9 KGS / PC
Height	640 - 730 mm

Length	740 - 1120 mm
Width	320 mm
Steel Leg Tube	Ø 25.4 mm

